

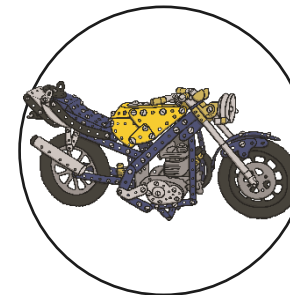
Key Facts

How long have toys existed?	Toys have existed for thousands of years. They were made out of the materials that were available at the time. Even stones and string have been made into toys.
What are modern toys made of?	Modern toys are mainly made of plastic. This is because it is usually safer and easier to make things with.
How are modern toys different?	Many modern toys use electricity to work. Computers and consoles were invented in the 20 th century.
What does 'within living memory' mean?	More recent history. We can speak to people who were alive then.
What does 'beyond living memory' mean?	For example, a teddy bear was made beyond living memory. We cannot speak to someone who bought it when it was brand new but people might have owned it afterwards.

dolls



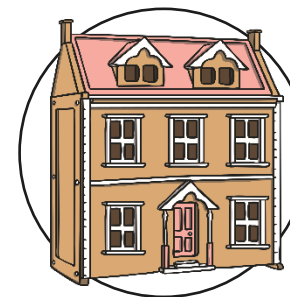
Meccano



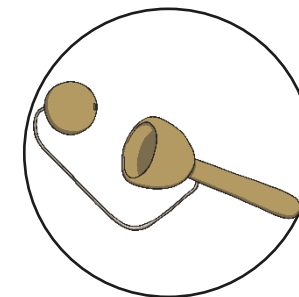
teddy bears

board
games

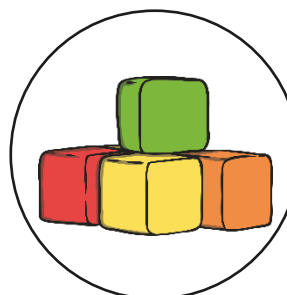
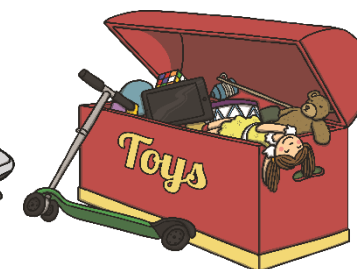
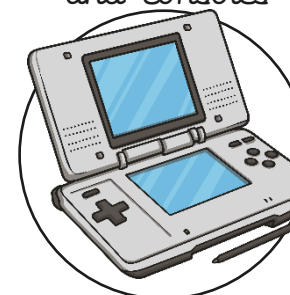
doll house



ball and cup



building blocks

Computer games
and consoles

Terrific Toys Knowledge Organiser – How have toys changed in the past 100 years? Year 1 and 2

Key Vocabulary			
20 th century	The 20 th century was 1900-1999.	past	Time that has gone by, happened at an earlier time
21 st century	We are in the 21 st century. It started in the year 2000 and will end in 2099.	present	Things that are happening or are here now
wooden toys	Lots of toys were made of wood. Boats, train sets and cup and ball were all made of wood. Some toys are still made of wood.	decade	A unit of time equal to 10 years
paper toys	Some toys, like paper windmills, were made out of paper.	recent	Something that has just happened, close to the present time
metal toys	Toy soldiers and some spinning tops were made out of metal.	museum	A building where collections of objects that are important to history, art or science are kept and shown to the public
plastic toys	Most modern toys are made of plastic. Toy soldiers, dolls and ride-on cars are usually made of plastic.	continuity	Where something stays the same or very similar over time.